

DO NOT LAY UP FOR YOURSELVES TREASURES ON EARTH, WHERE MOTHS AND RUST DESTROY AND WHERE THIEVES BREAK IN AND STEAL, BUT LAY UP FOR YOURSELVES TREASURES IN HEAVEN, WHERE NEITHER MOTHS NOR RUST DESTROY AND WHERE THIEVES DO NOT BREAK IN AND STEAL. FOR WHERE YOUR TREASURE IS, THERE YOUR HEART WILL BE

MATTHEW 6:19-34

ALSO. THE EYE IS THE LAMP OF THE BODY. SO, IF YOUR EYE IS HEALTHY, YOUR WHOLE BODY WILL BE FULL OF LIGHT, BUT IF YOUR EYE IS BAD, YOUR WHOLE BODY WILL BE FULL OF DARKNESS. IF THEN THE LIGHT IN YOU IS DARKNESS, HOW GREAT IS THE DARKNESS! NO ONE CAN SERVE TWO MASTERS, FOR EITHER HE WILL HATE THE ONE AND LOVE THE

MATTHEW 6:19-34

OTHER, OR HE WILL BE DEVOTED TO THE ONE AND
DESPISE THE OTHER. YOU CANNOT SERVE GOD
AND MONEY.

MATTHEW 6:19-34

THE GOSPEL OF

Matthew



MATTHEW 6

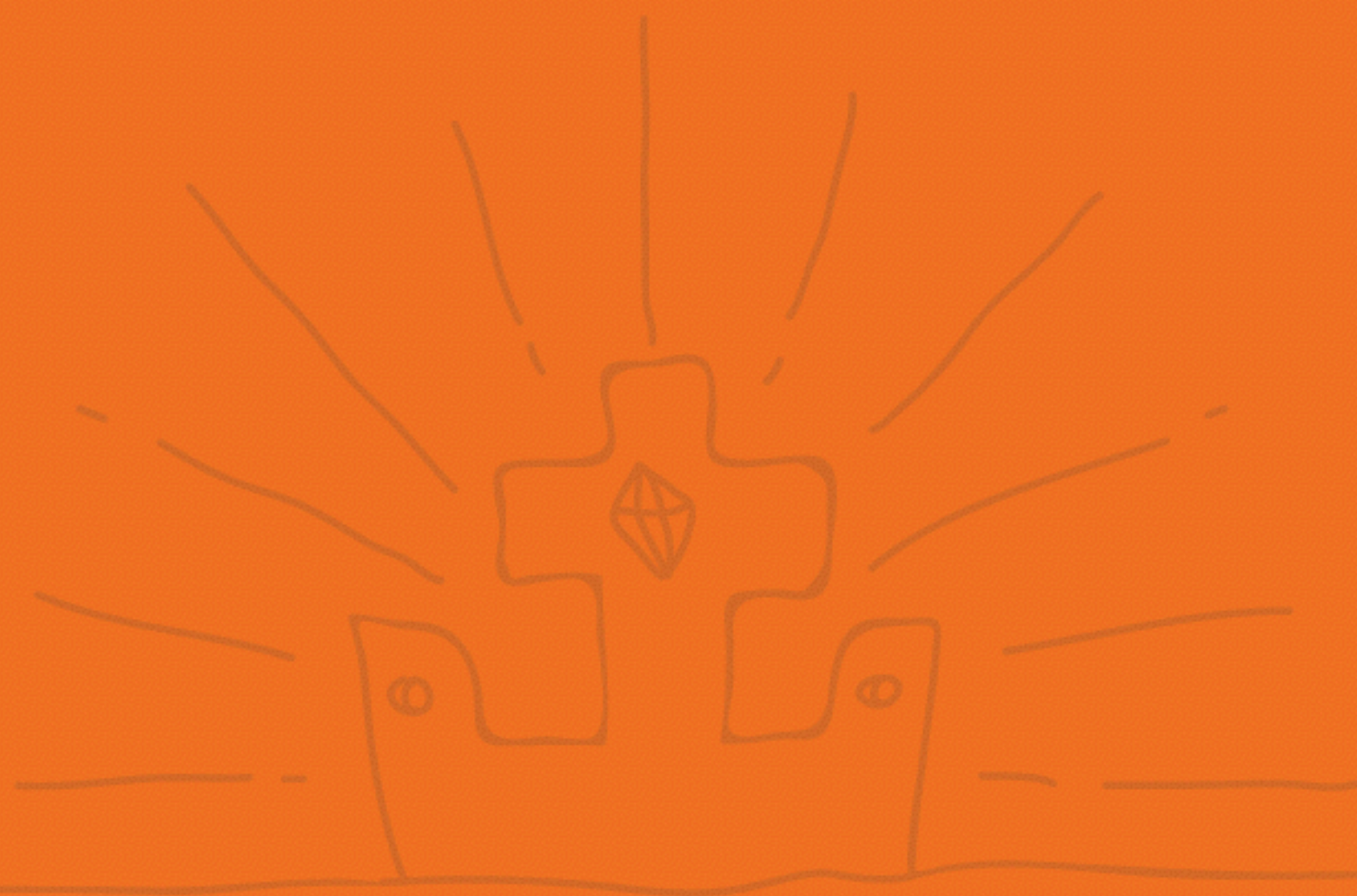
V. 19-34

Matthew



**YOU WORRY MOST ABOUT
WHAT YOU TREASURE MOST.**

Matthew

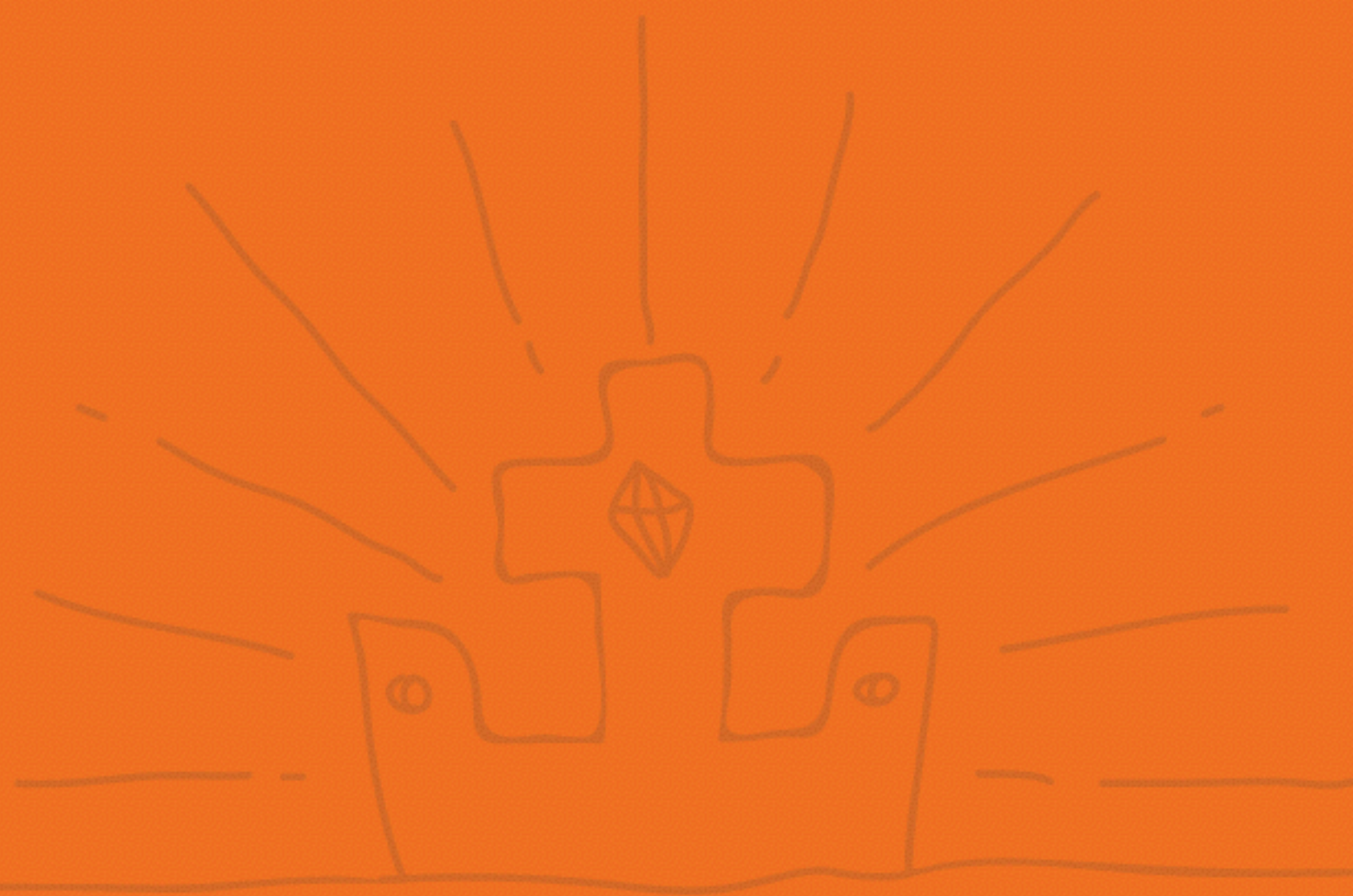


Matthew

MATTHEW 6

V. 19-34

Matthew



Matthew