

ONCE AGAIN, THE KINGDOM OF HEAVEN IS LIKE A NET THAT WAS LET DOWN INTO THE LAKE AND CAUGHT ALL KINDS OF FISH. WHEN IT WAS FULL, THE FISHERMEN PULLED IT UP ON THE SHORE. THEN THEY SAT DOWN AND COLLECTED THE GOOD FISH IN BASKETS, BUT THREW THE BAD AWAY. THIS IS HOW IT WILL BE AT THE END OF THE AGE. THE ANGELS WILL COME AND SEPARATE THE WICKED FROM THE

MATTHEW 13:47-50

Matthew

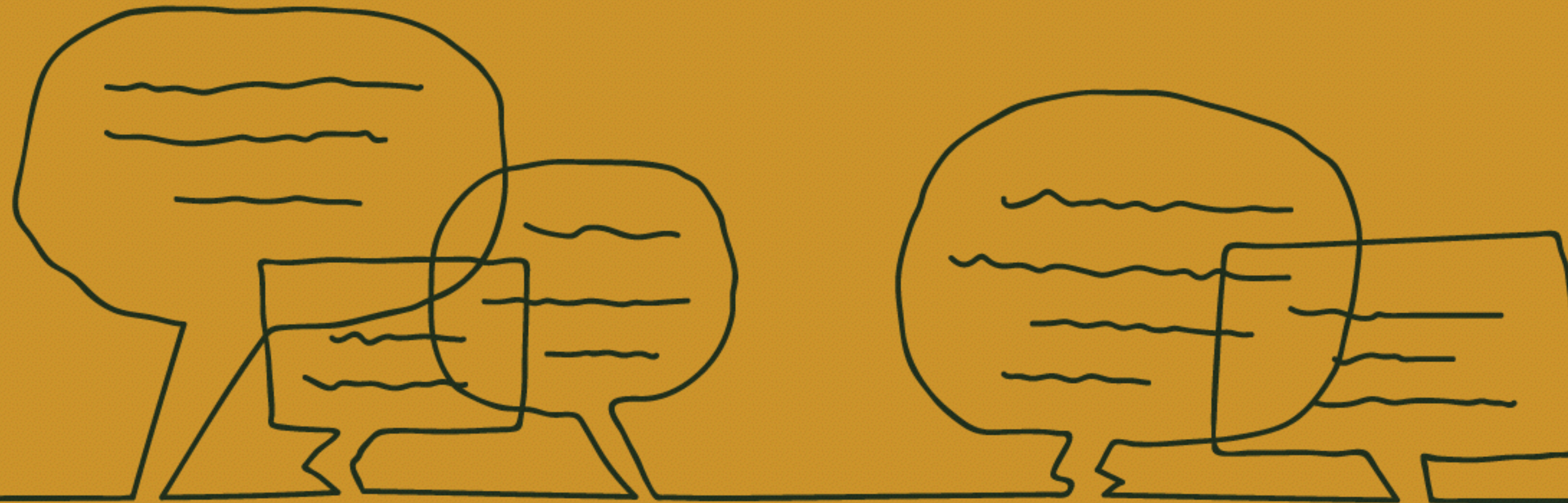
RIGHTEOUS AND THROW THEM INTO THE BLAZING
FURNACE, WHERE THERE WILL BE WEEPING AND
GNASHING OF TEETH.



MATTHEW 13:47-50

Matthew

THE GOSPEL OF
Matthew



RESPONSES
TO THE KINGDOM

A faint, light-colored line drawing in the background depicts two figures, possibly Jesus and a follower, engaged in conversation. The figure on the left is shown in profile, wearing a robe and a head covering. The figure on the right is facing slightly towards the viewer, also in a robe and head covering. The drawing is minimalist and serves as a subtle backdrop for the text.

MATTHEW 13

V. 47-50

Matthew



MATTHEW 13

V. 24-30

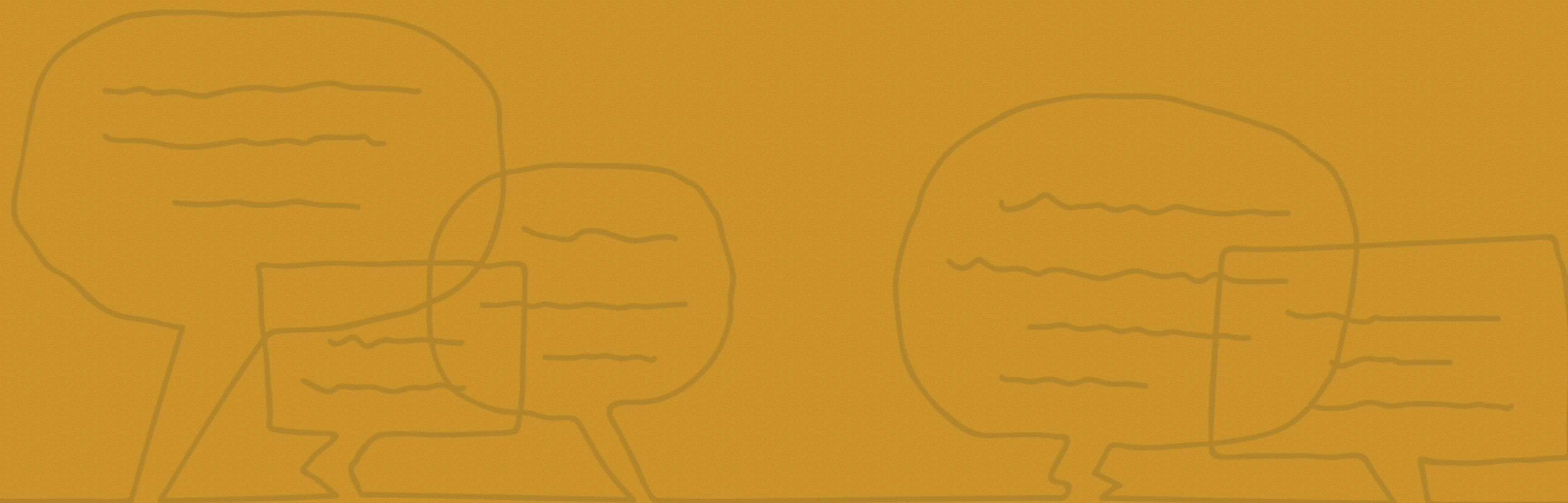
Matthew



MATTHEW 13

V. 36-43

Matthew



Matthew

THE OWNER'S SERVANTS CAME TO HIM AND SAID,
"SIR, DIDN'T YOU SOW GOOD SEED IN YOUR FIELD?
WHERE THEN DID THE WEEDS COME FROM?"



MATTHEW 13:27

Matthew

“AN ENEMY DID THIS,” HE REPLIED.



MATTHEW 13:28

Matthew

THE SERVANTS ASKED HIM, “DO YOU WANT **US** TO GO
AND PULL THEM UP?”



MATTHEW 13:28

Matthew

“NO,” HE ANSWERED, “BECAUSE WHILE YOU ARE PULLING THE WEEDS, YOU MAY UPROOT THE WHEAT WITH THEM.”



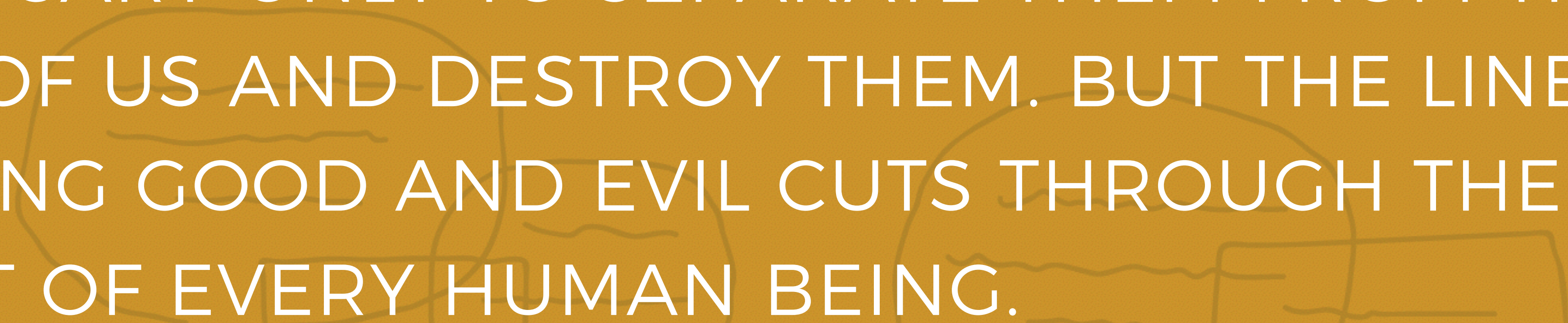
MATTHEW 13:29

Matthew



Matthew

IF ONLY THERE WERE EVIL PEOPLE SOMEWHERE
INSIDIOUSLY COMMITTING EVIL DEEDS, AND IT WERE
NECESSARY ONLY TO SEPARATE THEM FROM THE
REST OF US AND DESTROY THEM. BUT THE LINE
DIVIDING GOOD AND EVIL CUTS THROUGH THE
HEART OF EVERY HUMAN BEING.



ALEKSANDR SOLZHENITSYN

Matthew



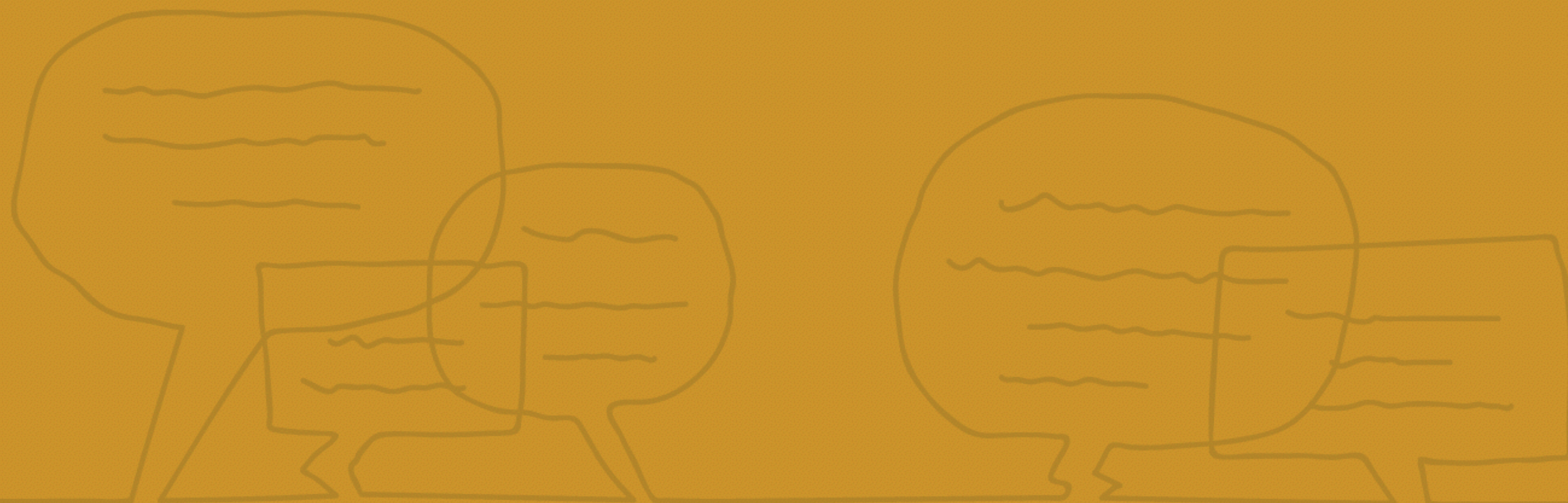
Matthew

THE LORD IS NOT SLOW IN KEEPING HIS PROMISE, AS SOME UNDERSTAND SLOWNESS. INSTEAD HE IS PATIENT WITH YOU, NOT WANTING ANYONE TO PERISH, BUT EVERYONE TO COME TO REPENTANCE.



2 PETER 3:9

Matthew



Matthew